

- A** **Water-Source Heat Pump** - we use the heat of our lakes to heat up our Welsh Water Discovery Centre.
- B** **Weather Station** - we're monitoring changes to the Welsh climate.
- C** **Wind Power** - This powers the lights around the Welsh Water Discovery Centre.
- D** **Solar Energy** - even in this cloudy part of Wales solar energy has a role.
- E** **Bore Hole Water** - we collect and harvest much of the water we use.
- F** **Ice House** - compare old and new green technologies.
- G** **Green Growing** - see how we garden for wildlife.
- H** **Performance Stage** - built using sustainable principles.
- I** **Recycling Waste** - we're developing an information area to show you how we recycle much of our waste. Due to open in summer 2011.
- J** **Living Machine** - we're using a brand new green technology to recycle our sewage.
- K** **Biomass Boiler** - burning wood to heat our buildings is carbon neutral.



The Earth is undergoing rapid **climate change** that is largely being caused by us - human beings. We are also using up many of our valuable natural resources.

This means we all need to reduce the amount of energy we use.

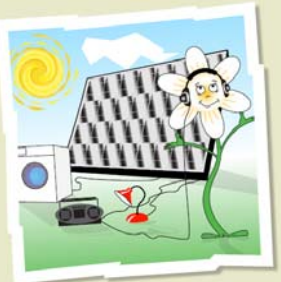
We've created a new cartoon character, **Lili Lloyd**, to illustrate these ideas.

Lili is based on the Snowdon Lily (*Lloydia serotina*), a lovely white flower that grows on the hillsides of Snowdonia in North Wales. It is likely to become the first plant in the UK to become extinct due to global warming.

Want to know more?

We've created special web pages - www.gardenofwales.org.uk/about/greentechnologytrail to help you know more about these green technologies and climate change.

These pages will also keep you up-to-date with some ambitious plans we have to generate more sustainable energy here at the Garden.



Ariennir gan
Lywodraeth Cynulliad Cymru
Funded by
Welsh Assembly Government



This project is funded by the Welsh Assembly Government through the National Science Academy.



Here at the Garden, we are trying out some **new green technologies** and ideas to combat climate change and reduce the resources we use.

We'd like to share these with you - **you might find them useful** in your home, workplace, school or college.

Follow the Lili Lloyd symbols on the map and look for the Green Technology signs.